

Queensland Neighbourhood Centre Strategy for Drought Resilience Launch

24th September 2020

Thank you to all who contributed to the Queensland Neighbourhood Centres Strategy for Drought Resilience

Neighbourhood Centre Representatives:

- Care Goondiwindi
- Charleville and District Community Support Association
- Somerset Region Community Support
- Tara and District Family Support Committee
- Boulia Community Support Service
- Brilla Brilla Centre
- Cloncurry Community Support Service
- Winton Shire Council
- Chinchilla Family Support Centre
- East Creek Community Centre
- Granite Belt Neighbourhood Centre
- Graham House Community Centre
- Millmerrin Community Support Service
- Murilla Community Centre
- Paroo Community Support Service
- Centacare Kingaroy
- Wilsonton Height Community Centre
- Dalby Crisis Support Association
- Harlaxton Neighbourhood Centre

QFCA Team: Mengting Lin, Natasha Odgers, Roslyn Wade, Chris Mundy, Tobi Leggans

Graphic Design Team: Emma Wordsworth (ANHCA) and Mengting Lin (QFCA)





Tara Castle
General Manager



OVERVIEW

PURPOSE

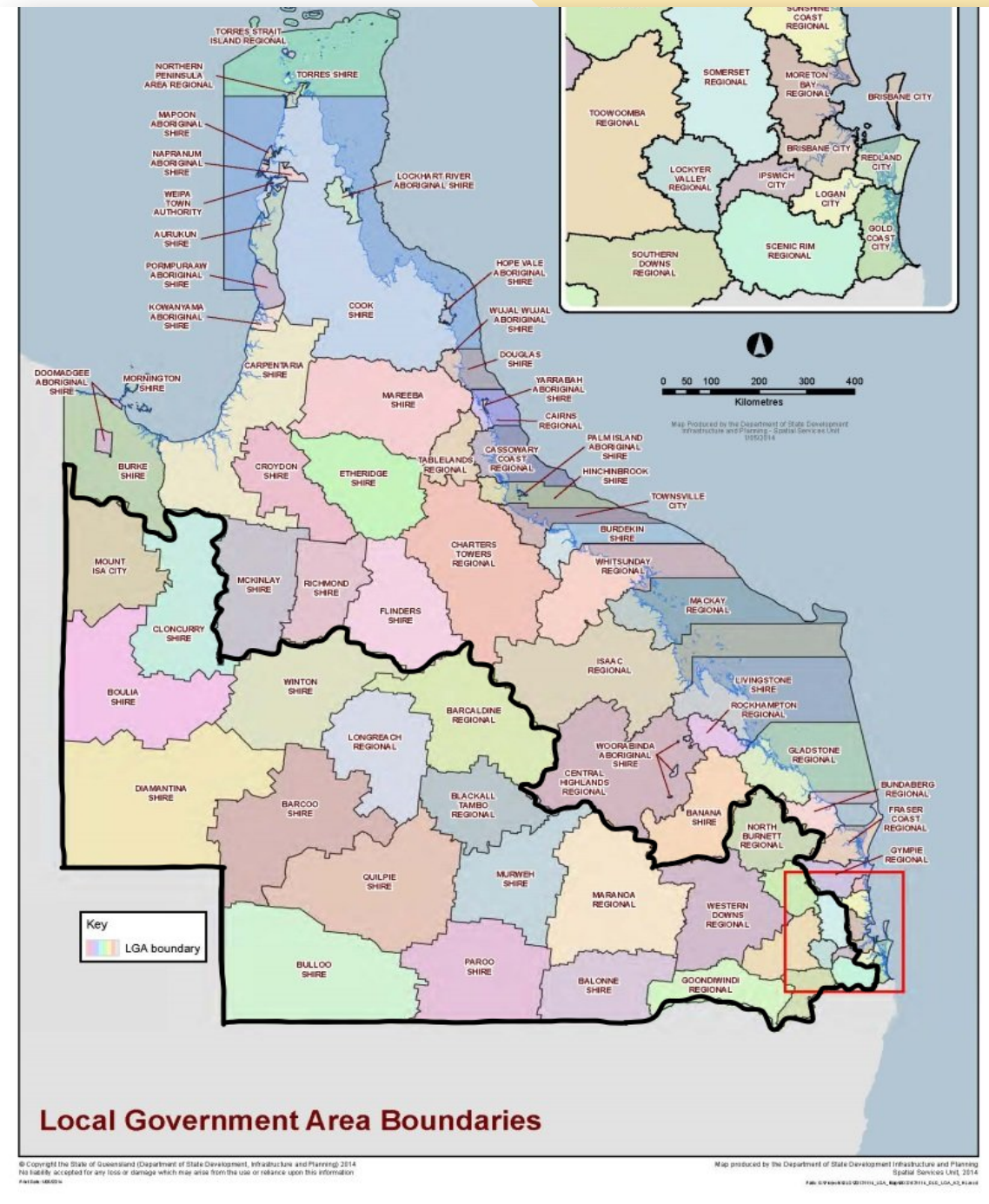
To promote social cohesion and community integration in response to drought through the work of Neighbourhood Centres.

FOCUS AREA

West and Far West Queensland

IMPLEMENTATION TIMEFRAME

3 years | September 2020 – 2023



STRATEGY LINKAGES

DROUGHT STRATEGY

Funded by the Queensland Community Foundation

MONSOON STRATEGY

Jointly funded under the Commonwealth/State Disaster Recovery Funding Arrangements.

FNQ and NQ Monsoon Trough Category C Flexible Funding Round 1 and 2

BUSHFIRE STRATEGY

CQ Bushfires Category C Flexible Funding

Queensland Neighbourhood Centres Strategy for Disaster Resilience

THE STRATEGY DEVELOPMENT PROCESS

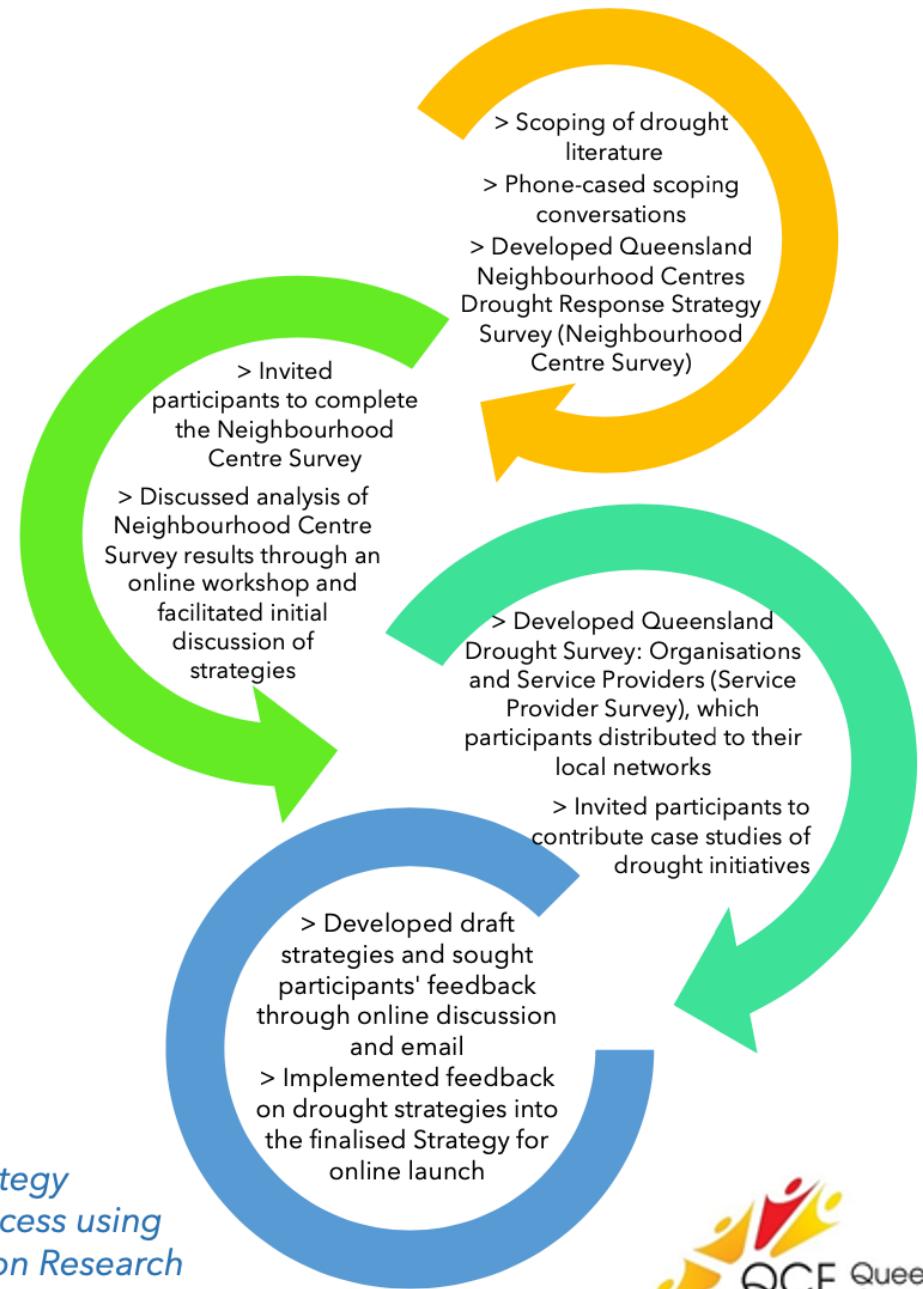


Figure 2. The Strategy Development Process using Participatory Action Research



STRATEGY ONE

Raise awareness among community organisations, drought management stakeholders and grant-funders, the value of Neighbourhood Centres as the support hub and knowledge bank for drought-affected communities.

STRATEGY TWO

Review current procedures and capacity for drought support and work together to develop and articulate a Centre-specific or regional Drought Management Plan which outlines their capacity, connections, resources and procedure for drought management.

The Drought Management Plan will be shared with Local Drought Committees and relevant stakeholders to enhance the coordination of local drought management.

STRATEGY THREE

Create opportunities to share their learnings and experiences with other drought management stakeholders and explore collaborations in supporting drought-affected communities. These stakeholders include the Local Drought Committee, local Council, service providers, community organisations and leaders, businesses and drought-focused organisations.

STRATEGY FOUR

Seek drought funds and resources to employ or enhance existing community-based Drought Workers who are dedicated to providing warm connections and timely, relevant support. This will help to build the social cohesion and resilience of local communities.

STRATEGY FIVE

Raise awareness among grant-funders and government to address the whole-of-community impact of drought and to communicate to drought-affected individuals that accepting assistance is a way of contributing to their local community's economy.

STRATEGY SIX

Continue to grow their formal and informal regional drought networks to further conversations and collaborations on building the resilience of drought-affected communities.

STRATEGIES

1

Raise awareness among community organisations, drought management stakeholders and grant-funders, the value of Neighbourhood Centres as the support hub and knowledge bank for drought-affected communities

2

Create opportunities to share their learnings and experiences with other drought management stakeholders and explore collaborations in supporting drought-affected communities. These stakeholders include the Local Drought Committee, local Council, service providers, community organisations and leaders, businesses and drought-focused organisations

3

Raise awareness among grant-funders and government to address the whole-of-community impact of drought and to communicate to drought-affected individuals that accepting assistance is a way of contributing to their local community's economy.

4

Review current procedures and capacity for drought support and work together to develop and articulate a Centre-specific or regional Drought Management Plan which outlines their capacity, connections, resources and procedure for drought management. The Drought Management Plan will be shared with Local Drought Committees and relevant stakeholders to enhance the coordination of local drought management.

5

Seek drought funds and resources to employ or enhance existing community-based Drought Workers who are dedicated to providing warm connections and timely, relevant support. This will help to build the social cohesion and resilience of local communities.

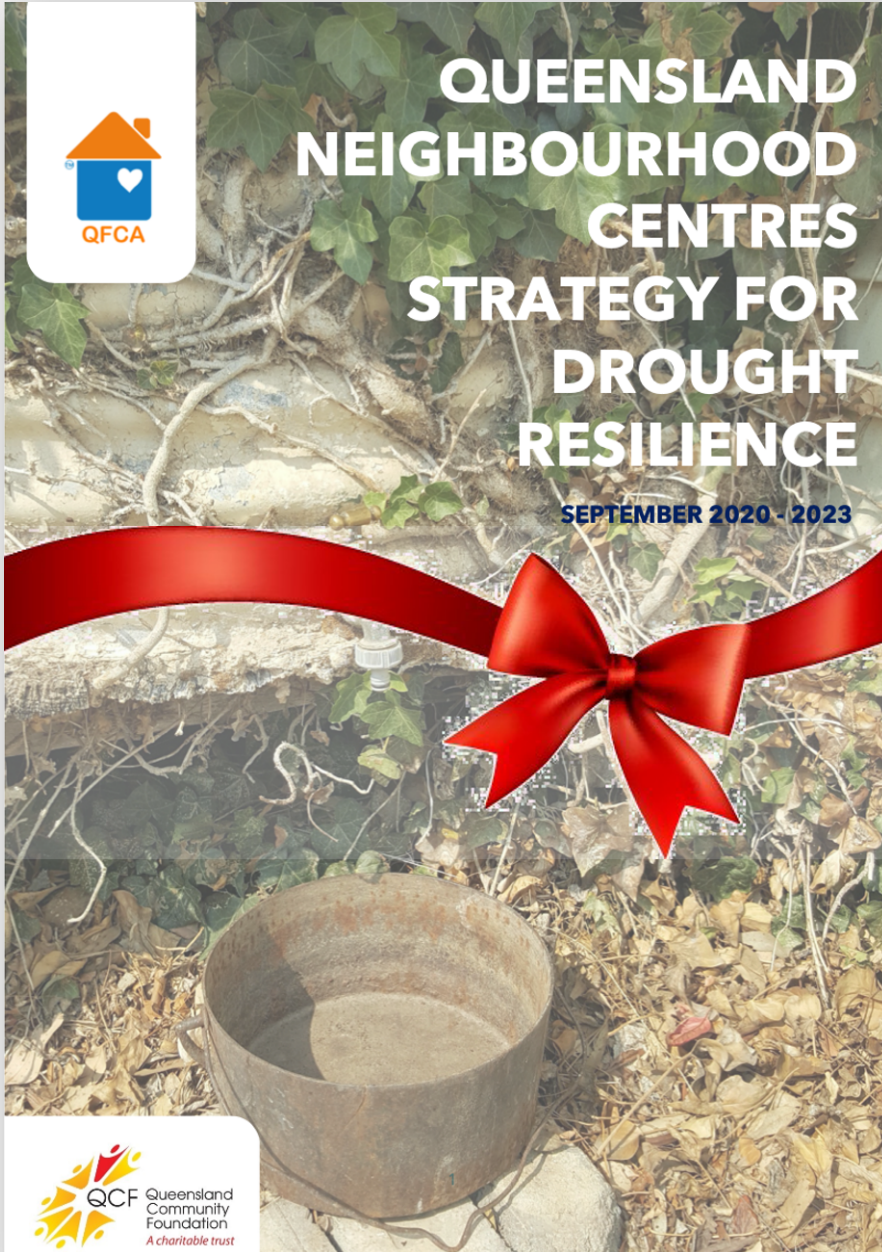
6

Continue to grow their formal and informal regional drought networks to further conversations and collaborations on building the resilience of drought-affected communities.



QUEENSLAND NEIGHBOURHOOD CENTRES STRATEGY FOR DROUGHT RESILIENCE

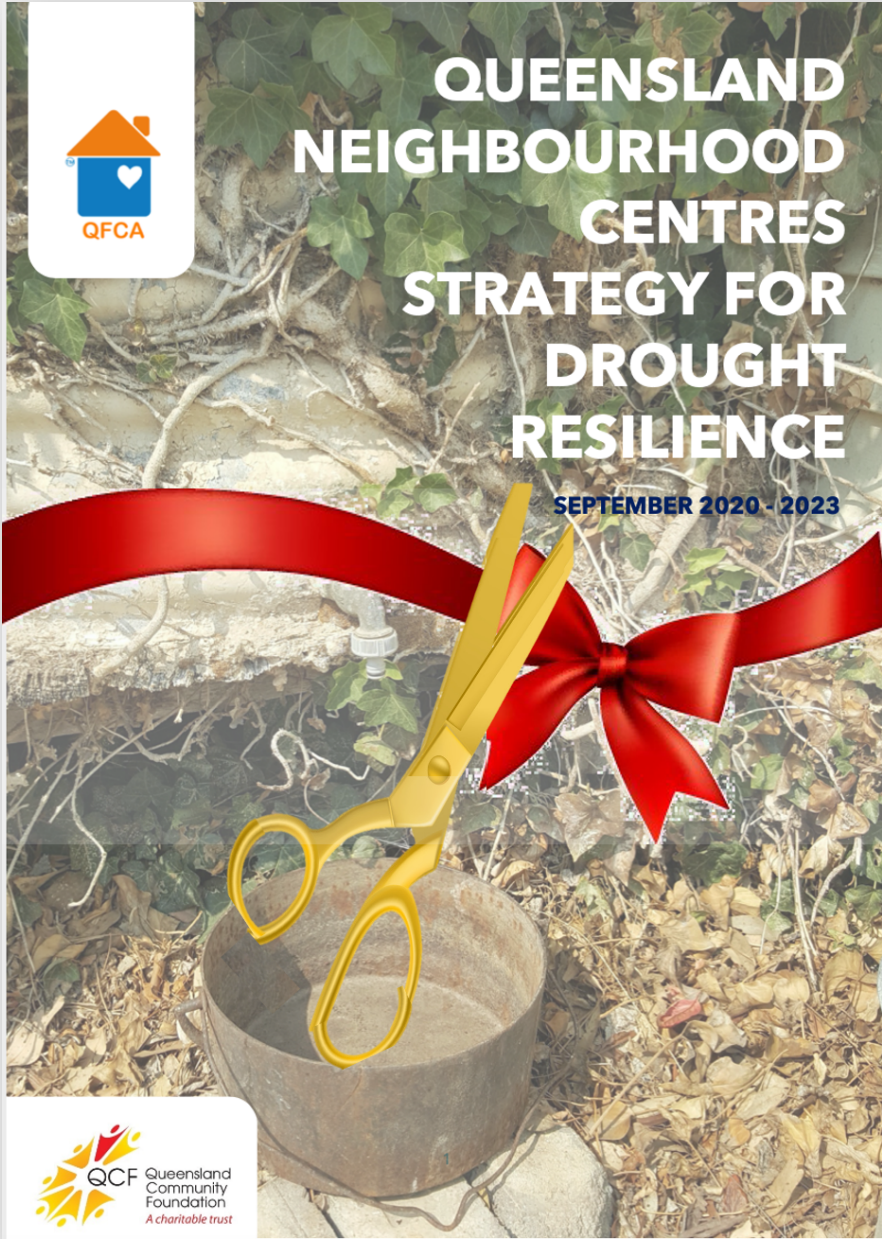
SEPTEMBER 2020 - 2023

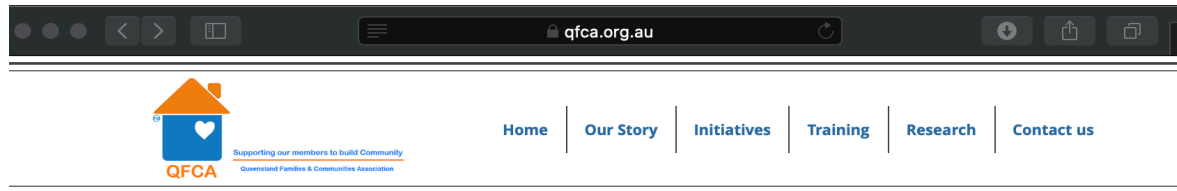




QUEENSLAND NEIGHBOURHOOD CENTRES STRATEGY FOR DROUGHT RESILIENCE

SEPTEMBER 2020 - 2023





Neighbourhood Centre Disaster Resilience Strategy Project

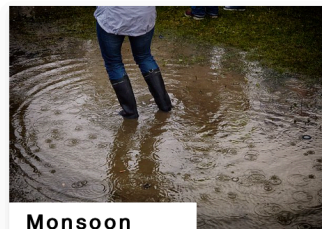
Neighbourhood Centres are playing a crucial role across the state in responding to natural disasters using community-led initiatives. The Queensland Families and Communities Association is developing a Queensland-wide Disaster Resilience Strategy with the Neighbourhood Centre sector by researching, analysing and using participatory methods to further develop and enhance this work. The Strategy will comprise of three distinct sub-strategies focused on drought, monsoon and bushfire. These strategies will be used as research and strategy frameworks for their respective regions while being aggregated into a Queensland-wide strategy for Neighbourhood Centres across the state. Details about the three project phases can be found below:



Drought

Neighbourhood Centre responses to drought in the South West Area Network and Far West Regions.

[Project Info](#)



Monsoon

Neighbourhood Centre responses to monsoonal flooding in Far North Qld and North Qld Regions.

[Project Info](#)



Bushfires

Neighbourhood Centre responses to bushfires in the Central Queensland and Sunshine Regions.

[Project Info](#)

Thank you to all the participating Neighbourhood Centres for your contribution of time and insights!

